

Scaled data based on original data using
LM-79-08 Approved Method: Electrical and Photometric Measurements of Solid-
State Lighting Products

Test Report Prepared for
Cooper Lighting Solutions
(formerly Eaton)

Brand: McGRAW-EDISON

Report Number: P#

Luminaire Tested: **ARCH4-110-AMB-U-T4W**

Issue Date: 12/16/2024

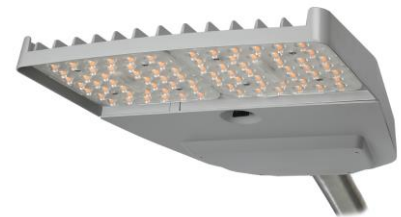
Test Information

Test Method: LM-79-08
Report Number: P#
TEST IS SCALED FROM IESNA LM-79-08 TEST DATA (G2-2406-129-10)
Test Lab: INNOVATION CENTER
Issue Date: 12/16/2024
Manufacturer: COOPER LIGHTING SOLUTIONS (FORMERLY EATON)
Product Line: McGRAW-EDISON
Catalog Number: ARCH4-110-AMB-U-T4W
Description: ARCHEON CONTEMPORARY ROADWAY AND AREA LUMINAIRE
(2) NARROW BAND AMBER, 600mA LIGHTSQUARES WITH 10 LEDS EACH AND TYPE IV WIDE OPTICS
Light Source: -
Ballast/Driver: -

Summary

Lumens per Lamp: N/A
Luminaire Lumens: 4651 lumens
Efficiency: N/A
Efficacy: 41.3 lumens/watt
Luminous Opening: Rectangular (W 1.17' x L: 0.58' x H: 0')
IES Classification: Type IV - Short
BUG Rating: B1 - U0 - G1

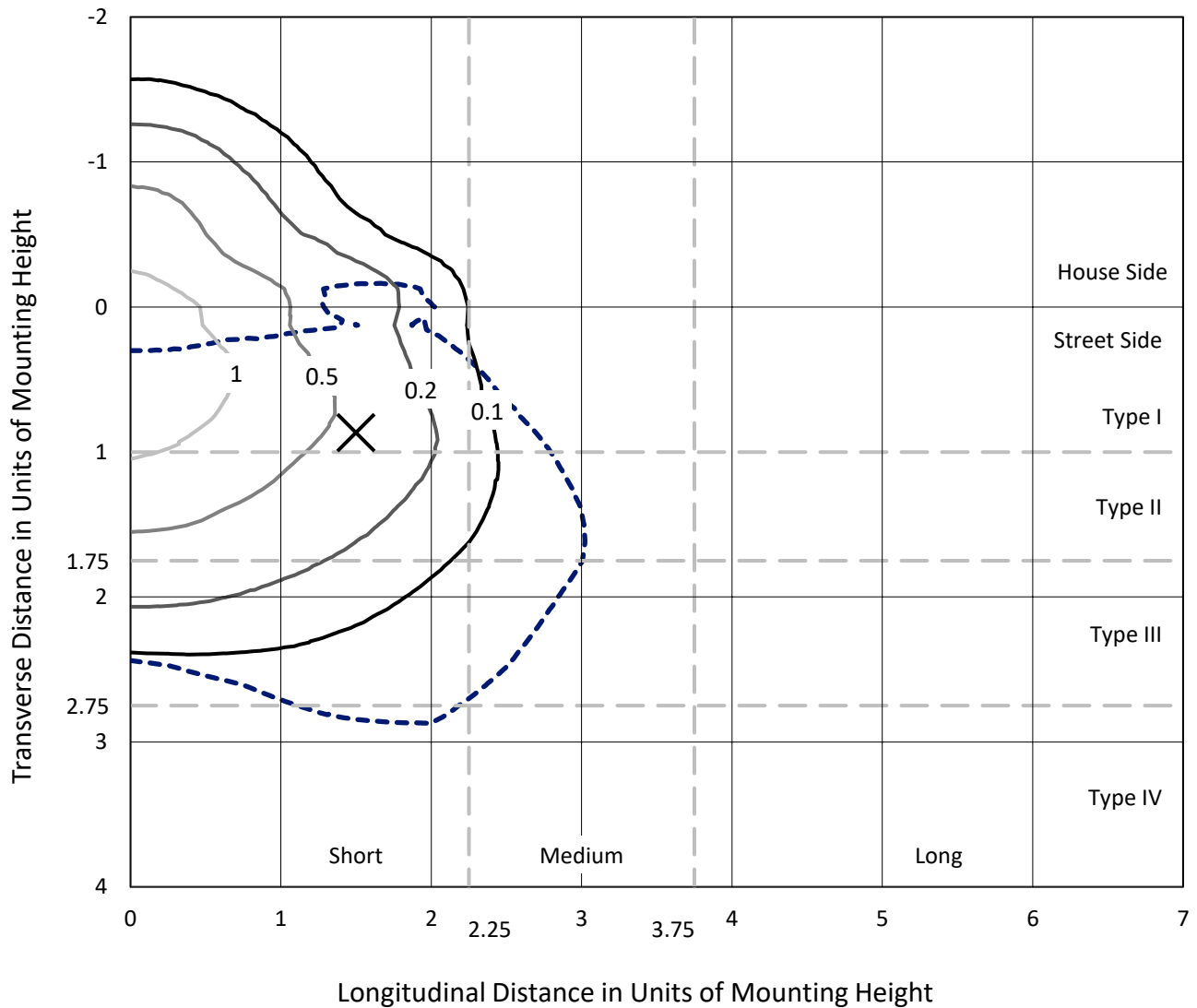
Input Watts (W): 112.6
Input Voltage (V): NR
Input Current (Ain): NR
Voltage Rise (V): NR
Power Factor: NR
Total Harmonic Distortion (THDi): NR
Frequency (hertz): 60
Stabilization Time: NR
Operation Time: NR
Ambient Temperature (°C): NR
Test Distance: 24 FT



REPORT NUMBER: P#
 CATALOG NUMBER: ARCH4-110-AMB-U-T4W

Iso-Footcandle Lines of Horizontal Illumination

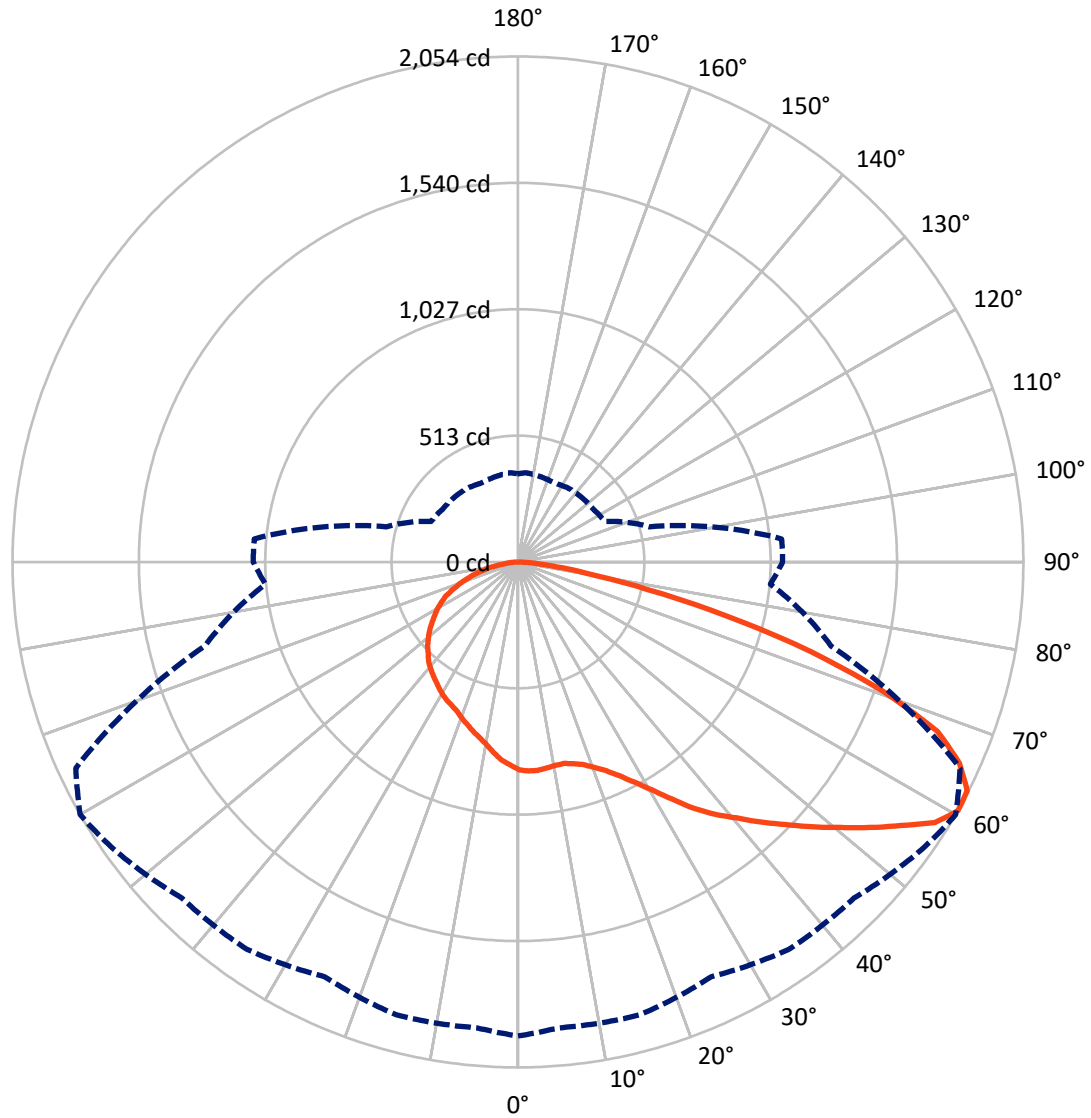
✕ Max cd
 - - - 1/2 Max cd



Based on 25 foot mounting height. Maximum calculated value = 1.5 fc
 Type IV - Short - N/A

REPORT NUMBER: P#
CATALOG NUMBER: ARCH4-110-AMB-U-T4W

Luminous Intensity Polar Plot



— Vertical Plane Through 60-Deg Lateral - - - Horizontal Cone Through 60-Deg Vertical

REPORT NUMBER: P#
 CATALOG NUMBER: ARCH4-110-AMB-U-T4W

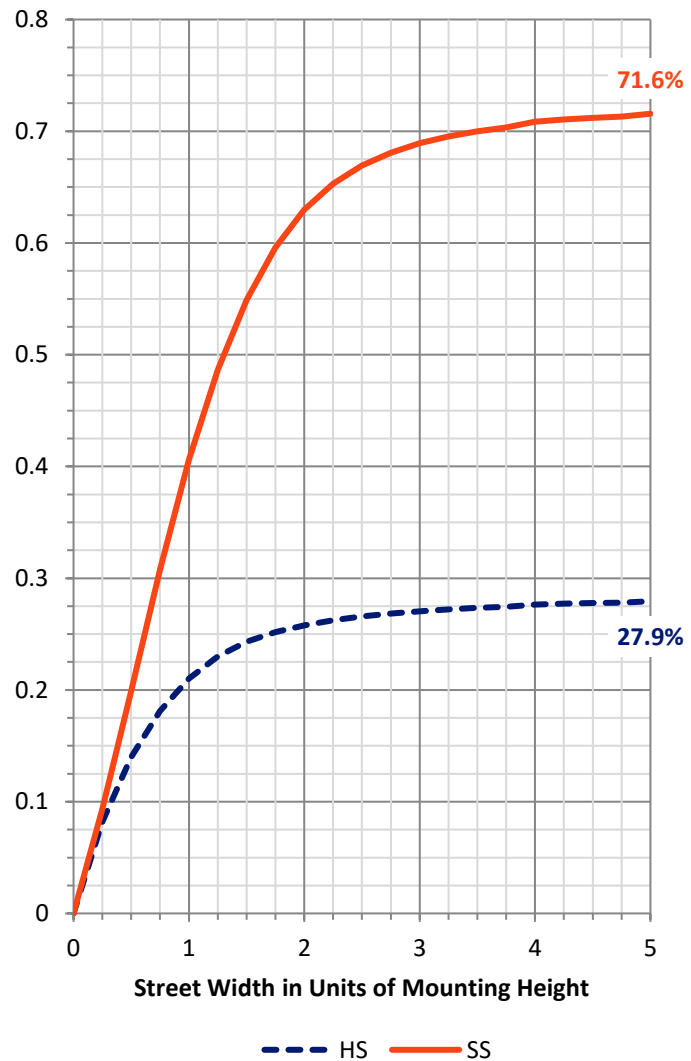
FLUX DISTRIBUTION:

		Downward	Upward	Total
House Side	Lumens	1310.9	0.0	1310.9
	% Fixture	28.2	0.0	28.2
Street Side	Lumens	3340.1	0.0	3340.1
	% Fixture	71.8	0.0	71.8
Total	Lumens	4651.0	0.0	4651.0
	% Fixture	100.0	0.0	100.0

Coefficient of Utilization

ZONAL LUMENS:

Zone	Lumens	% Fixture
0°-10°	77.7	1.7
10°-20°	230.7	5.0
20°-30°	402.0	8.6
30°-40°	610.0	13.1
40°-50°	828.0	17.8
50°-60°	1005.5	21.6
60°-70°	951.5	20.5
70°-80°	473.0	10.2
80°-90°	72.4	1.6
90°-100°	0.0	0.0
100°-110°	0.0	0.0
110°-120°	0.0	0.0
120°-130°	0.0	0.0
130°-140°	0.0	0.0
140°-150°	0.0	0.0
150°-160°	0.0	0.0
160°-170°	0.0	0.0
170°-180°	0.0	0.0
0°-90°	4651.0	100.0
0°-180°	4651.0	100.0



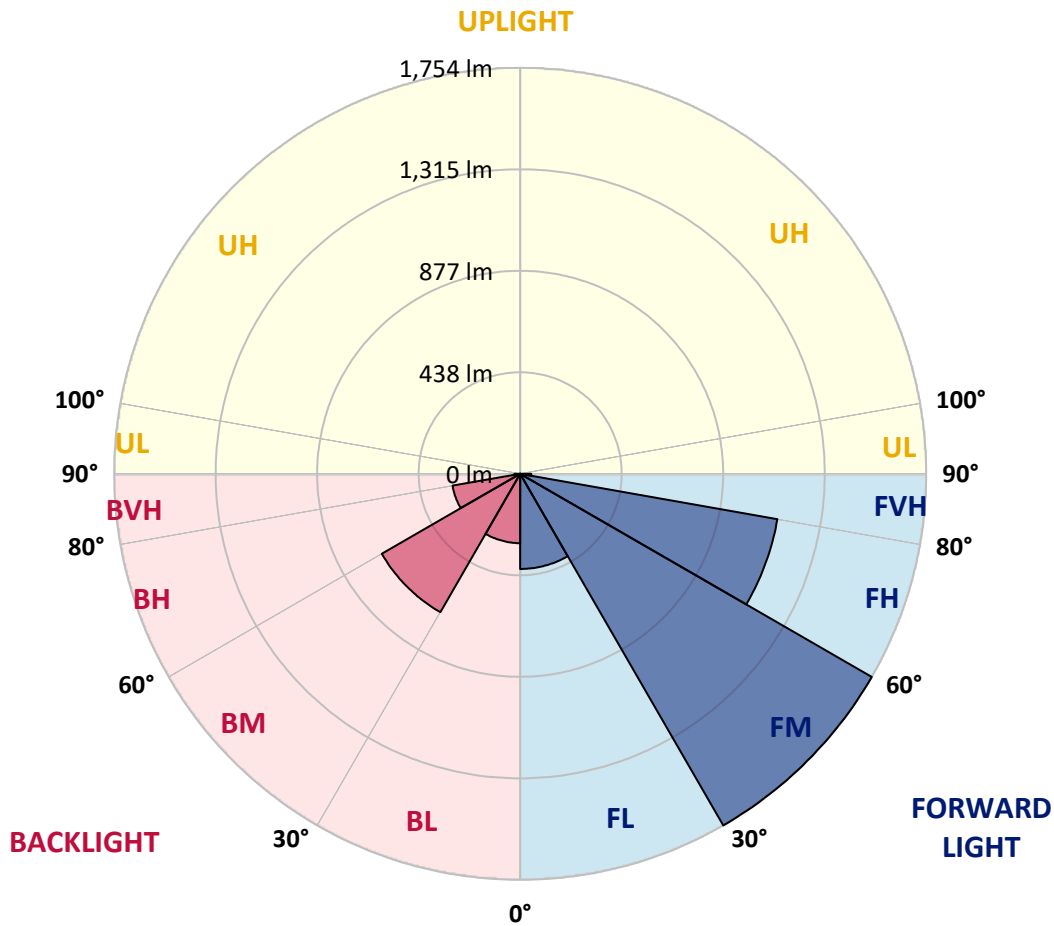
REPORT NUMBER: P#
 CATALOG NUMBER: ARCH4-110-AMB-U-T4W

LUMINAIRE CLASSIFICATION SYSTEM LUMEN TABLE AND BUG RATING:

Zone	Lumens	% Fixture	Zone Rating/Lumen Limit		
			B	U	G
FL (0°-30°)	411.0	8.8			
FM (30°-60°)	1753.6	37.7			
FH (60°-80°)	1128.0	24.3			G1/1800
FVH (80°-90°)	47.6	1.0			G1/100
BL (0°-30°)	299.4	6.4	B1/500		
BM (30°-60°)	690.1	14.8	B1/1000		
BH (60°-80°)	296.6	6.4	B1/500		G1/500
BVH (80°-90°)	24.9	0.5			G1/100
UL (90°-100°)	0.0	0.0		U0/0	
UH (100°-180°)	0.0	0.0		U0/0	

BUG Rating: B1-U0-G1

Type IV Short



REPORT NUMBER: P#
 CATALOG NUMBER: ARCH4-110-AMB-U-T4W

CANDELA DISTRIBUTION (FULL):

	0°	5°	15°	25°	35°	45°	55°	60°	65°	75°	85°
0°	845.1	845.1	845.1	845.1	845.1	845.1	845.1	845.1	845.1	845.1	845.1
2.5°	855.4	855.4	855.4	855.4	855.4	850.3	850.3	850.3	845.1	845.1	840.0
5°	855.4	855.4	855.4	855.4	855.4	850.3	850.3	850.3	845.1	845.1	840.0
7.5°	860.5	860.5	860.5	855.4	855.4	845.1	845.1	845.1	840.0	840.0	834.9
10°	881.0	886.1	881.0	870.7	860.5	850.3	840.0	840.0	834.9	834.9	829.8
12.5°	932.2	932.2	922.0	906.6	891.2	865.6	850.3	840.0	834.9	829.8	824.6
15°	998.8	998.8	988.6	962.9	937.3	896.4	865.6	850.3	840.0	834.9	829.8
17.5°	1060.3	1065.4	1050.0	1019.3	988.6	937.3	886.1	865.6	850.3	834.9	829.8
20°	1101.2	1101.2	1096.1	1070.5	1044.9	983.4	922.0	891.2	865.6	840.0	829.8
22.5°	1121.7	1126.9	1121.7	1106.4	1085.9	1034.7	962.9	922.0	886.1	845.1	834.9
25°	1147.3	1152.5	1147.3	1132.0	1126.9	1085.9	1009.0	962.9	916.8	860.5	840.0
27.5°	1203.7	1208.8	1193.4	1167.8	1162.7	1132.0	1065.4	1014.2	957.8	875.9	850.3
30°	1306.1	1306.1	1285.6	1229.3	1203.7	1183.2	1132.0	1075.6	1009.0	896.4	860.5
32.5°	1434.2	1434.2	1403.4	1316.4	1275.4	1239.5	1203.7	1147.3	1065.4	922.0	875.9
35°	1552.0	1552.0	1521.2	1423.9	1352.2	1311.2	1285.6	1229.3	1132.0	952.7	881.0
37.5°	1644.2	1649.3	1613.4	1516.1	1454.7	1377.8	1352.2	1301.0	1183.2	968.1	886.1
40°	1736.4	1731.3	1685.2	1577.6	1531.5	1449.5	1418.8	1367.6	1265.1	1003.9	896.4
42.5°	1803.0	1777.3	1746.6	1633.9	1603.2	1536.6	1485.4	1444.4	1342.0	1034.7	911.7
45°	1879.8	1838.8	1782.5	1695.4	1659.5	1613.4	1557.1	1521.2	1423.9	1075.6	932.2
47.5°	1905.4	1859.3	1823.4	1777.3	1721.0	1685.2	1639.1	1608.3	1505.9	1121.7	952.7
50°	1915.6	1869.5	1869.5	1813.2	1772.2	1741.5	1721.0	1695.4	1593.0	1167.8	968.1
52.5°	1879.8	1890.0	1900.3	1833.7	1823.4	1797.8	1813.2	1792.7	1680.0	1213.9	988.6
55°	1936.1	1936.1	1936.1	1864.4	1879.8	1854.2	1895.2	1890.0	1787.6	1260.0	1014.2
57.5°	1977.1	1972.0	1972.0	1910.5	1931.0	1910.5	1972.0	1997.6	1900.3	1301.0	1029.5
60°	1925.9	1900.3	1905.4	1859.3	1920.8	1931.0	2018.1	2053.9	1982.2	1316.4	1029.5
62.5°	1710.8	1705.6	1741.5	1721.0	1828.6	1895.2	1992.5	2048.8	2013.0	1321.5	1009.0
65°	1403.4	1423.9	1516.1	1593.0	1705.6	1833.7	1915.6	1972.0	1956.6	1285.6	968.1
67.5°	1034.7	1070.5	1229.3	1429.1	1567.3	1726.1	1828.6	1838.8	1787.6	1132.0	829.8
70°	799.0	814.4	978.3	1219.0	1398.3	1511.0	1639.1	1572.5	1444.4	932.2	660.7
72.5°	563.4	578.8	763.2	993.7	1193.4	1239.5	1275.4	1244.7	1106.4	727.3	517.3
75°	368.8	379.0	527.6	737.6	927.1	916.8	845.1	870.7	819.5	563.4	399.5
77.5°	245.9	251.0	332.9	471.2	609.5	624.9	522.4	537.8	553.2	404.6	292.0
80°	158.8	163.9	210.0	276.6	307.3	379.0	312.4	286.8	286.8	256.1	199.8
82.5°	87.1	92.2	117.8	153.7	158.8	169.0	158.8	158.8	153.7	158.8	133.2
85°	35.9	35.9	46.1	56.3	56.3	66.6	71.7	71.7	71.7	82.0	71.7
87.5°	10.2	10.2	10.2	10.2	10.2	10.2	15.4	15.4	15.4	15.4	10.2
90°	0.0	0.0	0.0	0.0	0.0	0.0	0.0	0.0	0.0	0.0	0.0

REPORT NUMBER: P#
 CATALOG NUMBER: ARCH4-110-AMB-U-T4W

CANDELA DISTRIBUTION (continued):

	90°	95°	105°	115°	125°	135°	145°	155°	165°	175°	180°
0°	845.1	845.1	845.1	845.1	845.1	845.1	845.1	845.1	845.1	845.1	845.1
2.5°	845.1	840.0	834.9	829.8	824.6	824.6	819.5	819.5	814.4	814.4	819.5
5°	840.0	834.9	824.6	814.4	804.2	793.9	783.7	778.6	773.4	768.3	768.3
7.5°	834.9	829.8	814.4	793.9	773.4	758.1	742.7	732.5	727.3	722.2	727.3
10°	829.8	819.5	799.0	768.3	742.7	722.2	701.7	696.6	691.5	691.5	696.6
12.5°	824.6	814.4	788.8	747.8	717.1	696.6	681.2	676.1	676.1	681.2	681.2
15°	824.6	814.4	778.6	732.5	696.6	676.1	671.0	676.1	676.1	686.4	686.4
17.5°	824.6	809.3	768.3	712.0	676.1	665.9	665.9	676.1	686.4	696.6	696.6
20°	824.6	809.3	752.9	691.5	660.7	655.6	665.9	681.2	696.6	706.8	712.0
22.5°	829.8	809.3	742.7	671.0	640.3	650.5	665.9	686.4	701.7	717.1	722.2
25°	834.9	814.4	732.5	655.6	630.0	640.3	665.9	691.5	706.8	727.3	727.3
27.5°	845.1	819.5	732.5	645.4	619.8	630.0	660.7	691.5	712.0	732.5	737.6
30°	855.4	829.8	732.5	635.1	604.4	619.8	650.5	691.5	712.0	732.5	737.6
32.5°	865.6	840.0	727.3	619.8	589.0	599.3	640.3	686.4	706.8	727.3	737.6
35°	875.9	850.3	727.3	609.5	568.5	578.8	619.8	676.1	701.7	717.1	727.3
37.5°	886.1	870.7	737.6	594.2	553.2	563.4	599.3	660.7	691.5	701.7	712.0
40°	906.6	896.4	742.7	583.9	532.7	542.9	578.8	645.4	676.1	681.2	686.4
42.5°	927.1	927.1	747.8	568.5	517.3	522.4	558.3	624.9	650.5	655.6	655.6
45°	952.7	957.8	752.9	542.9	496.8	502.0	537.8	599.3	624.9	630.0	630.0
47.5°	978.3	988.6	747.8	522.4	481.5	491.7	517.3	563.4	594.2	599.3	599.3
50°	1003.9	1019.3	732.5	496.8	461.0	471.2	486.6	527.6	548.1	558.3	553.2
52.5°	1029.5	1050.0	701.7	471.2	440.5	450.7	455.9	481.5	502.0	502.0	496.8
55°	1060.3	1075.6	660.7	440.5	420.0	425.1	425.1	440.5	445.6	450.7	440.5
57.5°	1080.8	1085.9	609.5	414.9	394.4	399.5	394.4	394.4	399.5	404.6	399.5
60°	1075.6	1075.6	553.2	389.3	373.9	368.8	363.7	353.4	358.5	363.7	358.5
62.5°	1055.1	1029.5	496.8	358.5	348.3	332.9	327.8	322.7	327.8	327.8	322.7
65°	993.7	927.1	435.4	332.9	317.6	297.1	302.2	297.1	297.1	297.1	297.1
67.5°	829.8	717.1	368.8	297.1	281.7	266.3	276.6	266.3	271.5	281.7	276.6
70°	650.5	537.8	307.3	261.2	240.7	235.6	245.9	240.7	245.9	256.1	251.0
72.5°	502.0	399.5	261.2	220.2	204.9	204.9	215.1	215.1	220.2	230.5	230.5
75°	379.0	302.2	220.2	184.4	169.0	169.0	179.3	179.3	184.4	199.8	184.4
77.5°	276.6	230.5	184.4	143.4	133.2	133.2	138.3	148.5	153.7	158.8	153.7
80°	189.5	163.9	128.1	102.4	97.3	97.3	107.6	107.6	107.6	112.7	112.7
82.5°	128.1	112.7	82.0	66.6	61.5	61.5	66.6	76.8	76.8	82.0	76.8
85°	66.6	61.5	51.2	35.9	35.9	35.9	35.9	30.7	30.7	25.6	25.6
87.5°	10.2	10.2	15.4	15.4	15.4	15.4	10.2	10.2	5.1	0.0	0.0
90°	0.0	0.0	0.0	0.0	0.0	0.0	0.0	0.0	0.0	0.0	0.0

(END OF REPORT)